

Alphabet Match Up



Blog
Teachers Pay Teachers
Facebook
Pinterest



Teacher/Parent Instructions for **ALPHABET MATCH UP**

A letter recognition and letter sound matching game.

SET UP

1. Cut out the letter and picture playing cards.
2. Choose six letter cards and their matching pairs. Place the other cards to the side.

Note: If your child is just beginning to learn the names and sounds of letters, try to choose a couple letters that he/she already knows and a couple that he/she hasn't learned yet.

3. Before playing the game, lay each letter card next to its matching pair and teach them to your child. For example, "{Aa} makes the /a/ sound like the word {apple}."
4. After reviewing the six possible matches, mix up the cards and spread them out face down on a flat surface.
5. Have each player take turns flipping over two cards at a time. If he flips a matching letter-picture pair, he keeps the cards. If he turns two cards that don't match, he returns them to the same spots face down. The player with the most matches at the end of the game wins.

Aa

Bb

Cc

Aa



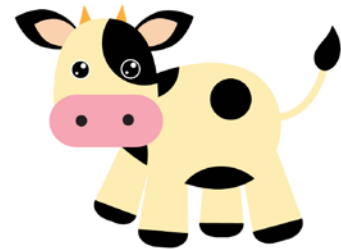
Apple

Bb



Bee

Cc



Cow

Dd

Ee

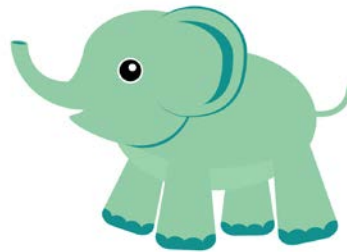
Ff

Dd



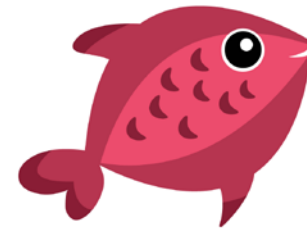
Drum

Ee



Elephant

Ff



Fish

Gg

Hh

Ii

Gg



Giraffe

Hh



Hedgehog

Ii



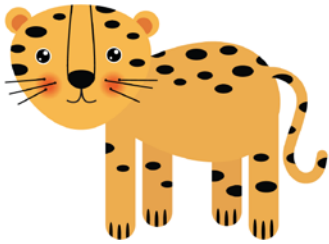
Island

Jj

Kk

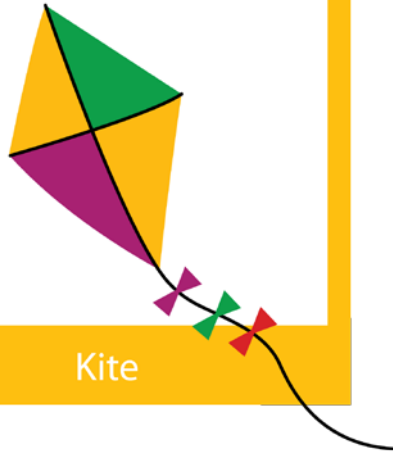
Ll

Jj



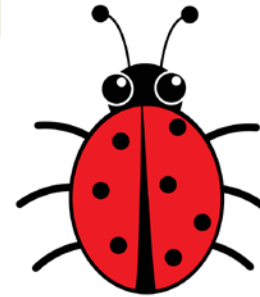
Jaguar

Kk



Kite

Ll



Ladybug

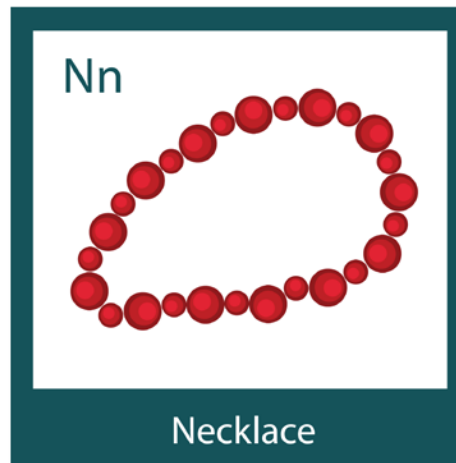
Mm

Nn

Oo



Monkey



Necklace



Owl

Pp

Qq

Rr

Pp



Penguin

Qq



Queen

Rr



Rainbow

Ss

Tt

Uu

Ss



Snake

Tt



Tree

Uu



Umbrella

Vv

Ww

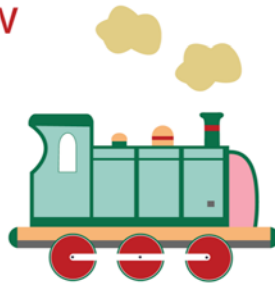
Xx

Vv



Vegetables

Ww



Wagon

Xx



Xylophone

Yy

Zz

Yy



Yogurt

Zz



Zebra



[Blog](#)
[Teachers Pay Teachers](#)
[Facebook](#)
[Pinterest](#)